

# NovaNET<sup>®</sup>

## Student Installation Guide for Windows

**Student:** \_\_\_\_\_

**School:** \_\_\_\_\_

**Host Address:** \_\_\_\_\_ **Port #:** \_\_\_\_\_

**Group Name:** \_\_\_\_\_

**Username:** \_\_\_\_\_

**Password:** \_\_\_\_\_

**For HELP, contact (your school) at:**

\_\_\_\_\_

\_\_\_\_\_



# Welcome to NovaNET!

You are about to become a member of the NovaNET<sup>®</sup> community of learners. Thousands of students just like you use NovaNET every day to help them reach their individual goals.

On the following pages, you will learn how to download and install your NovaNET software on a Windows workstation. (If you are installing NovaNET on a Mac OS X workstation, you will need the Mac OS X version of this guide.)

Be sure to do the following tasks before installing the software:

- Know your operating system – You will need to know which version of the Windows Operating System you are running on your computer. Write that information here: \_\_\_\_\_  
\_\_\_\_\_
- Turn off your virus protection and any other software you have running before installing the NovaNET software. Common virus programs include Norton Anti - Virus, McAfee, AVG, etc.

Be sure to have the following information handy during the installation process :

1. Pearson School Companies website at: <http://support.PearsonDigital.com>
2. Information provided by your school. See the front cover for the following:

Host address  
Port number  
Group name  
Username and password

Follow each direction carefully, so you do not have any problems installing your software. If you encounter a problem, contact your school. See the front cover of this installation guide for Help information.

Good Luck and Welcome to NovaNET!

# New Installation on a Windows Workstation

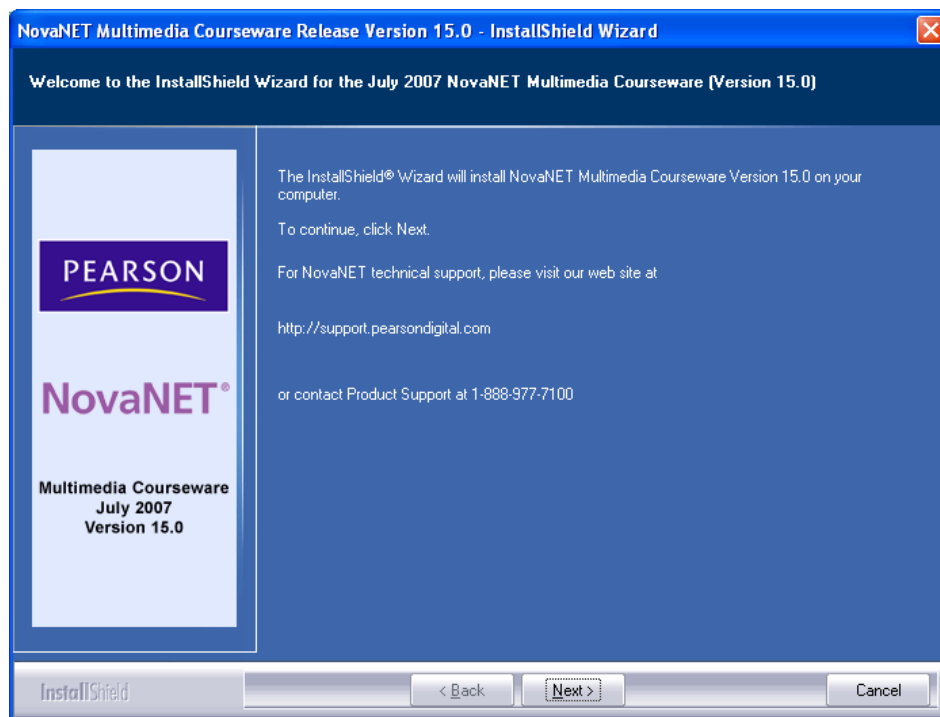
## Preparation

You need to log in as an administrative user or a user with administrative rights. If you have questions, contact your school.

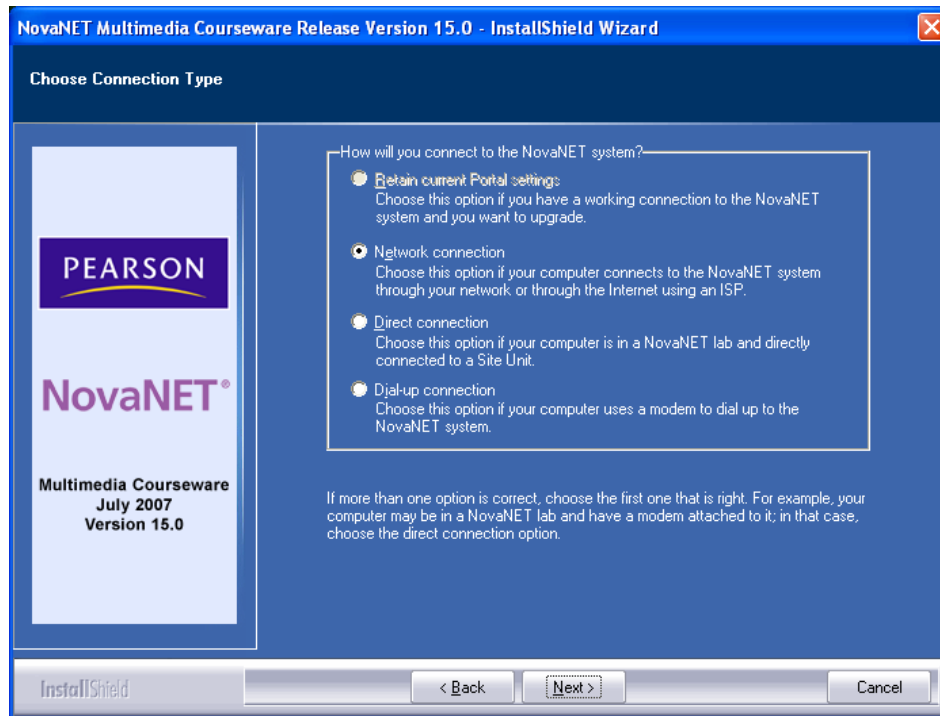
- 1 Close all open programs, including your antivirus and security applications.
- 2 Use your web browser such as Internet Explorer to open the Pearson School Companies Product Support website at: [Support.PearsonDigital.com](http://Support.PearsonDigital.com).
- 3 Look for [Product Support](#) and click on it to open.
- 4 Scroll down and look for **NovaNET** and click on it to open.
- 5 Finally, look for [Downloads](#) and click on it to open.

## Downloading and Installing Portal

1. Click on [Download](#) to the right of **Portal Installer (WIN)** to begin the download process. The File Download window appears. You will be asked to save the installer program to your hard drive or run it from the website. Choose **Run** and click **OK**.
2. An Internet Explorer security warning may be displayed. Click **Yes** or **Run**.
3. The Preparing Setup window opens. If Portal is already installed on your hard drive, the Question window asks if you want to continue with the installation. Click **Yes**. Click **Next** to continue.
4. On the **NovaNET Welcome** screen, click **Next**.

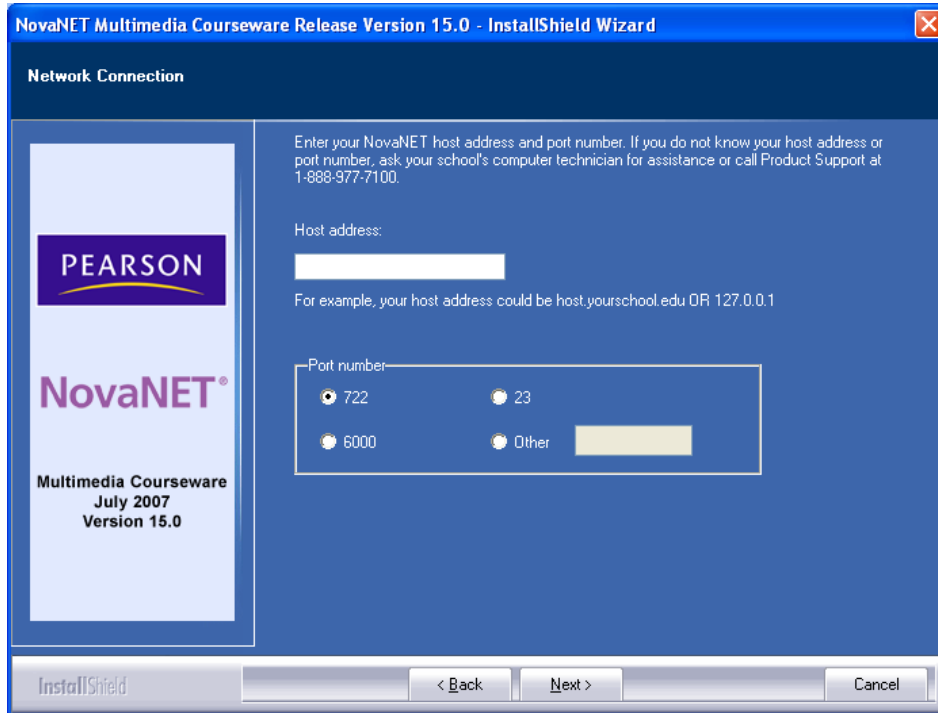


5. On the **Choose Connection Type** screen, select **Network** connection and click **Next**.

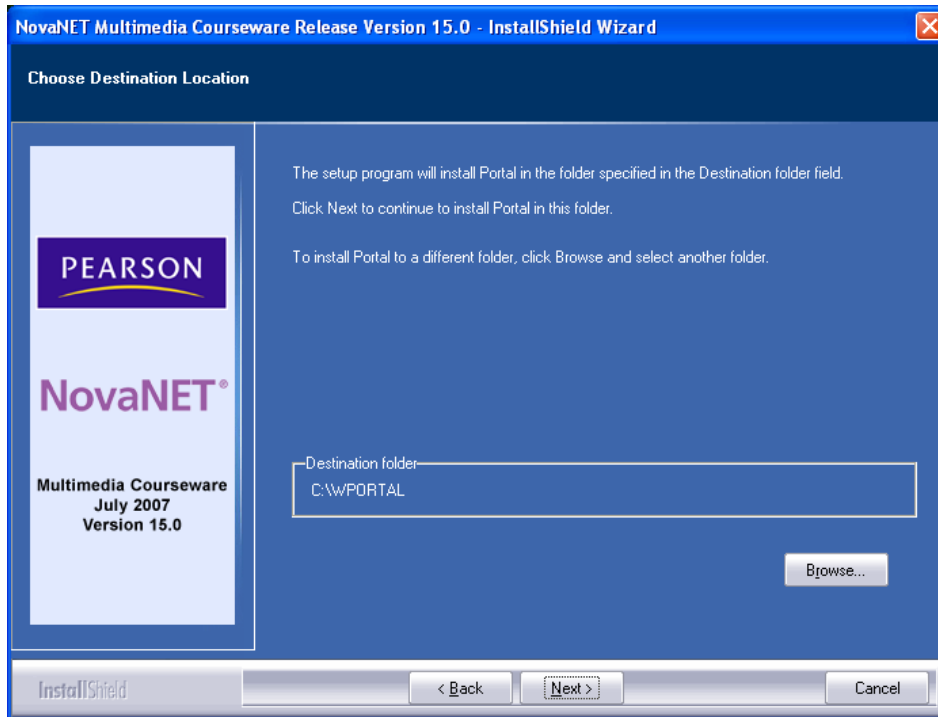


**Note:** If you already had a previous version of NovaNET installed on your workstation, the Retain Current Settings button is selected in the Choose Connection Type window. Go to Step 10. If this is the first installation of NovaNET on this workstation, continue to Step 6.

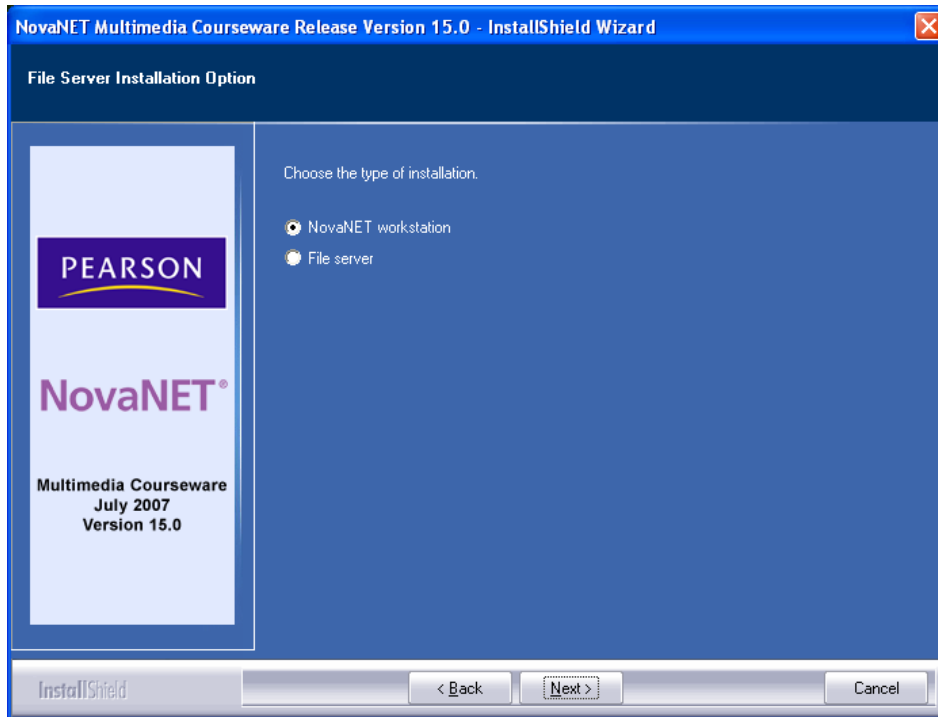
6. On the **Network Connection** screen, enter the host address and port number given to you by your school on the front cover of this guide, and click **Next**.



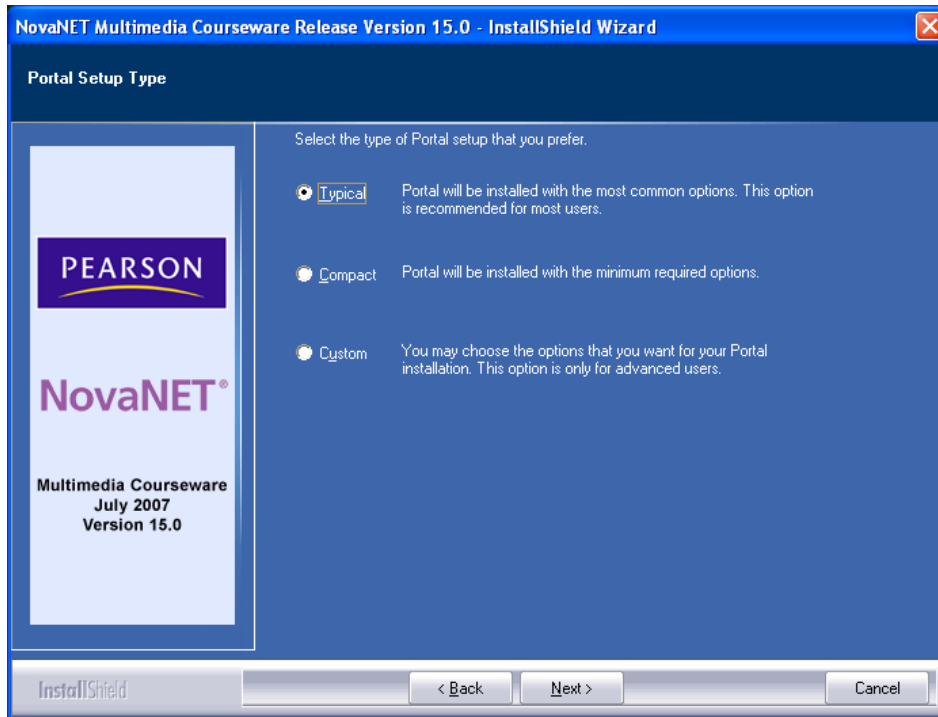
7. On the **Choose Destination Location** screen, click **Next** to use the default location.



8. On the **File Server Installation Option** screen, select **NovaNET Workstation** and click **Next**.



9. On the **Portal Setup Type** screen, select **Typical** installation.



10. Click **Next**. The Information window displays your connection setting details.
11. Click **Next** to continue or click **Back** to modify the connection setup.
12. When the installation is complete, the **Setup Complete** window appears. Do not restart your workstation at this time. Make sure that the **No, I want to restart my computer later** option is selected and then click **Finish**.

**Note:** this is part 1 of a multi-part process, so you must install both the portal software and the multimedia lessons for the NovaNET software to operate properly. Go to the next section to continue the installation.

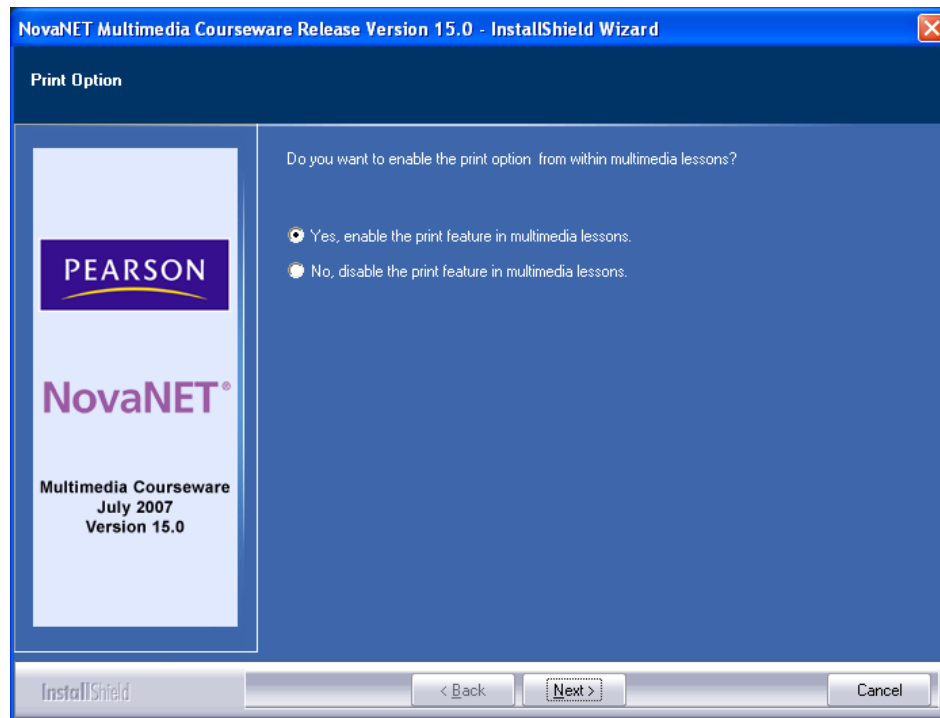
## Downloading and Installing NovaNET Multimedia Lessons

There are five (5) subject area web installers. Each one needs to be installed for a complete NovaNET Multimedia Courseware installation. Contact your school if you think you need only one subject.

1. Select the subject grouping and click the [Download](#) link to begin the download process. The File Download window appears. You will be asked to save the installer program to your hard drive or run it from the website. Select **Run**.

<a href="#">APT Courseware Installer (WIN)</a>	<a href="#">Instructions</a>	<a href="#">Download</a>
<a href="#">Language Arts / ESL Courseware Installer (WIN)</a>	<a href="#">Instructions</a>	<a href="#">Download</a>
<a href="#">Mathematics Courseware Installer (WIN)</a>	<a href="#">Instructions</a>	<a href="#">Download</a>
<a href="#">Social Studies Courseware Installer (WIN)</a>	<a href="#">Instructions</a>	<a href="#">Download</a>
<a href="#">Science Courseware Installer (WIN)</a>	<a href="#">Instructions</a>	<a href="#">Download</a>

2. A security warning may be displayed. Click **Yes** or **Run**.
3. The Multimedia Lesson Preparing Setup window opens, followed by the QuickTime information window. Click **OK** to continue.
4. On the **Print Option** screen that asks if you want to enable printing from multimedia lessons, click **Yes** or **No**. If you want to print the NovaNET lesson screens for reference or to hand them in to your instructor, click **Yes**.



5. The Select Components window opens. You can either install the complete subject area or select an individual course.
  - a. Click on the check box to install all of the multimedia lessons within the subject area.
  - b. Click on the Change button to see a list of courses or lesson groupings that you can select if you do not want to install the entire subject.

**Note:** If you have questions on which subject area groupings to install or how to complete a Custom Installation, contact your school.

6. When you finish your selections, click **Next**.
7. The Ready to Install window opens. Click **Next** to continue. This step will take several minutes to complete.
8. The Installation Complete window opens when the installation is complete.
9. If you want to install additional subject areas using the other web installers, change the selection to **No, I will restart my computer later**, and click **Finish**.
10. If you are finished installing lessons, leave the default selection as **Yes, I want to restart my computer now**, and click **Finish**.

**Congratulations! You have successfully installed your NovaNET software. You can now access the lessons by double-clicking on the NovaNET icon on your workstation's desktop screen.**

**Good luck with your studies!**